

Play and Stay Sessions

at

Hertsmere Leisure Children's Centres

Welcome to Play and Stay

Play and Stay is a parent and child play session that offers support for parents and children under 5 years old. It is very different from a toddler group.

We provide lots of learning opportunities for you and your child to enjoy together. This may include: story and song times, physical activities, cooking, outdoor play and messy play. We have different themes each term that help you and your child/children develop a whole range of skills.

Anyone can come to Play and Stay. It is a group for parents who would like to learn more about their child/children's development, would like support or guidance on a wide variety of issues and who would like to meet other local parents.

To fully enjoy Play and Stay please come dressed for messy play.



What happens at Play & Stay?

Joining In

There are a range of activities provided every week and this is an opportunity to take part in activities that you and your child may not have tried at home. In order to get maximum benefit from the group we ask that you join in with your child as much as possible including helping, tidying up, snack time and singing.

Snack Time

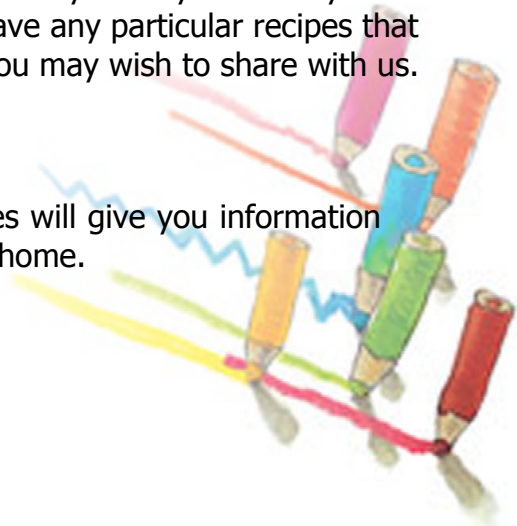
We have a snack time during each session. Please let us know if your child has any allergies or follows any specific diet. We aim to provide a range of healthy foods to encourage your child to sample new things and try new tastes, even if you think he/she may not like them, you may be surprised!

Cooking

We will sometimes incorporate cooking into the sessions and we encourage parents/carers to join in with their child. We aim to cook a range of healthy snacks which you may like to try at home. Please let us know if you have any particular recipes that you would like to try or any that you may wish to share with us.

When are the sessions?

The Children's Centres programmes will give you information about the nearest session to your home.



Supervision of Children

The sessions are for you to take an active role with your child so we would expect you to supervise your child at all times. You are responsible for his/her safety whilst on the premises. However we do understand that it can be hard if you have two or more children of different ages, so please ask a member of staff if you need help. Please help to ensure the safety of all the children by making sure that all exit doors are firmly closed when you have entered or exited through them.

Difficult Behaviour

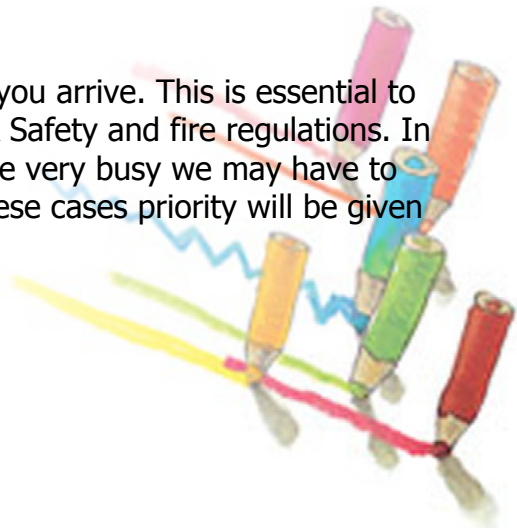
We realise that all children's behaviour can be difficult at times and parents may sometimes find situations hard to deal with within the sessions. We will be very happy to support you in finding solutions to difficult behaviours. Feel free to ask staff for support or advice

Is there anything else I need to know?

Signing In / Registration

All families wishing to use this service must be registered with us. If you have not registered please ask a member of staff.

Please remember to sign in when you arrive. This is essential to enable us to comply with Health & Safety and fire regulations. In the event that the sessions become very busy we may have to limit the numbers attending. In these cases priority will be given to registered families.



Smoking

Smoking is not permitted at any time whilst on the premises.



Mobile Phones

Mobile phones are distracting during the session. Please do not use your phone whilst attending the session unless to make or receive an emergency call.



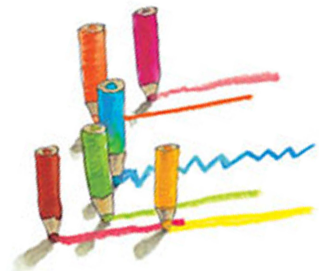
Your views

Your views about the service provided at the Play and Stay group are very important to us as our aim is to provide a positive experience for both parents and children. To enable us to assess whether the group is meeting your needs, we will from time to time ask you directly what you think about certain aspects of the group or ask you to complete short questionnaires. We thank you in advance for your co-operation with this.

Hertsmere Leisure Children's Centres
The BECC
Shakespeare Drive
Off Furzehill Road
Borehamwood
Herts, WD6 2FD

Tel: 020 8386 4038

www.hertsmere-children.co.uk



**Sure Start
Children's Centres**

UK Registered Charity no.1093653